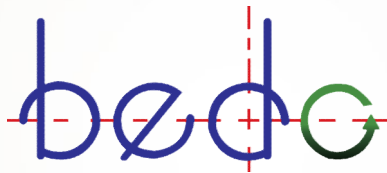


## Company Introduction



**Bangladesh Engineering Design & Consultancy**

**Inspiration of Engineering**

## Our Expertize

Design, Consultancy, Supply and Technical Service

- ▶ WTP, ETP, STP & RWH
- ▶ Complete Utility System
- ▶ Energy Audit and Optimization
- ▶ Boiler Inspection, Testing and Tuning
- ▶ Safety Valve, Pressure Vessel, Lifting & Other Equipment Inspection & Testing
- ▶ Pressure Vessel & Storage Tanks
- ▶ Economizer, De-aerator & Feed tank
- ▶ Heat Exchangers
- ▶ Customized and engineered equipment

## Our Strength

- ▶ Professional and industry experienced engineers in design.
- ▶ Professional Certification.
- ▶ Access to international and local Codes and Standards.
- ▶ Industry renowned design and simulation software packages.
- ▶ Qualified QA/QC personnel.



**BNBC**

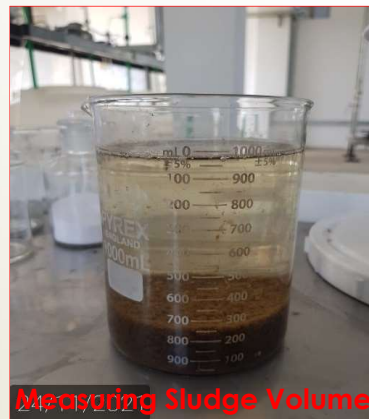
**DoE**



# Design and troubleshoot by analytical method

In-house LAB for WTP and ETP

BEDC



# We Provide Complete Solution for Utility System Design

**BEDC**

1) P&ID and Equipment Sizing

STEPS OF DETAIL DESIGN

3) Isometric Drawing

2) 3D Drawing

4) Bill of Material and Equipment Datasheet

5) Construction Supervision

250000L FUEL STORAGE SYSTEM

**250000L FUEL STORAGE SYSTEM**

**1) P&ID and Equipment Sizing**

**2) 3D Drawing**

**3) Isometric Drawing**

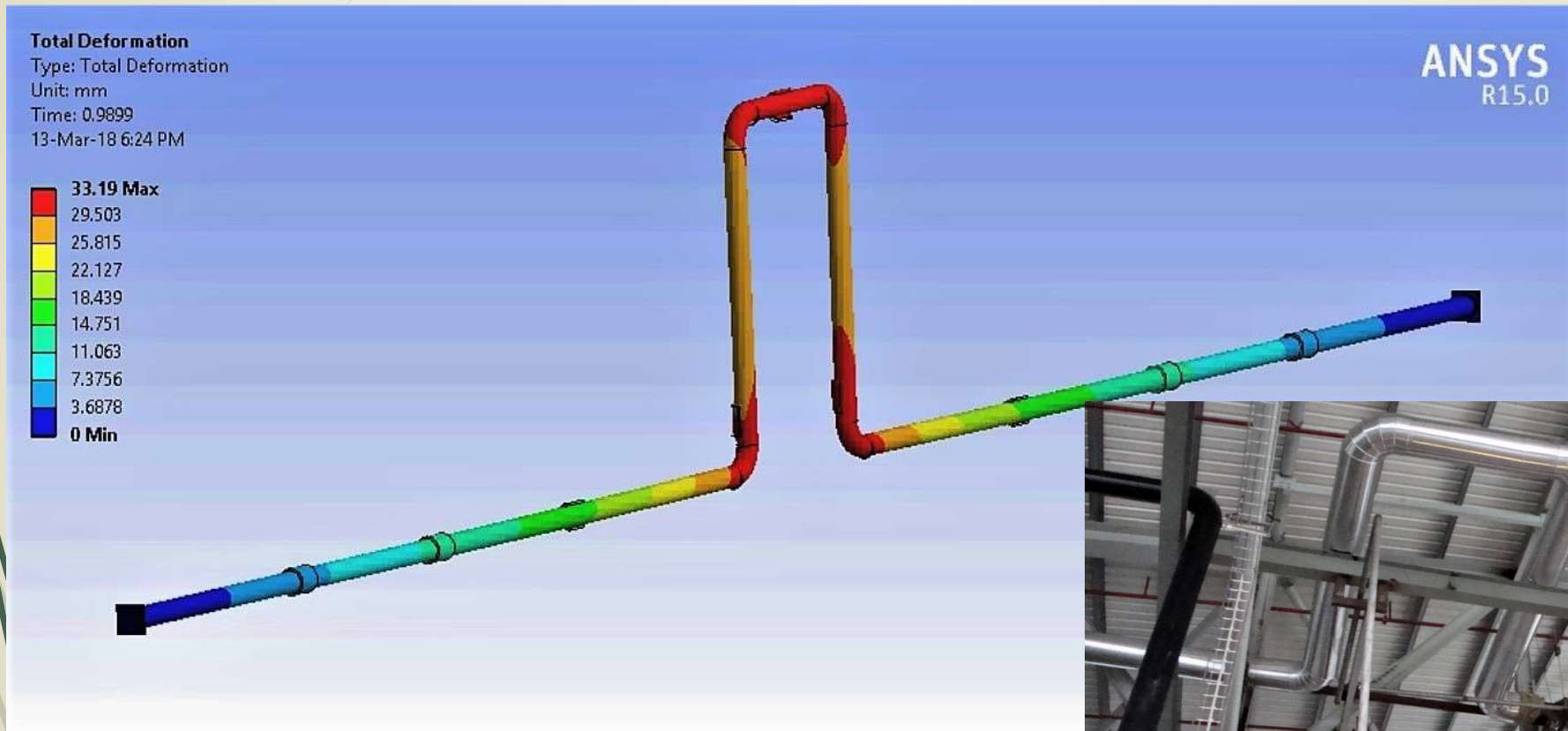
**4) Bill of Material and Equipment Datasheet**

**5) Construction Supervision**

SL No	Item Name	Specification	Size	QTY	UNIT	STATUS
1	PIPE	Carbon Steel, ERW, ASTM A 106 Gr. B or ASTM A53 Gr. B, Schedule 40, Bevel end.	DN 80			
2	PIPE	Carbon Steel, ERW, ASTM A 106 Gr. B or ASTM A53 Gr. B, Schedule 40, Bevel end.	DN 40			
3	PIPE	Carbon Steel, ERW, ASTM A 106 Gr. B or ASTM A53 Gr. B, Schedule 40, Bevel end.	DN 32			
4	PIPE	Carbon Steel, ERW, ASTM A 106 Gr. B or ASTM A53 Gr. B, Schedule 40, Bevel end.	DN 25			
5	PIPE	Carbon Steel, ERW, ASTM A 106 Gr. B or ASTM A53 Gr. B, Schedule 40, Bevel end.	DN 20			
6	FLANGE	Weld neck, Class 90, Raised Face, Carbon Steel, ASTM A182, ASME B16.5, STD Bore	DN 80			
7	FLANGE	Weld neck, Class 90, Raised Face, Carbon Steel, ASTM A182, ASME B16.5, STD Bore	DN 50			
8	FLANGE	Slip on, Class 90, Raised Face, Carbon Steel, ASTM A182, ASME B16.5, STD Bore, Threaded end	DN 40			
9	FLANGE	Slip on, Class 90, Raised Face, Carbon Steel, ASTM A182, ASME B16.5, STD Bore, Threaded end	DN 32			
10	FLANGE	Slip on, Class 90, Raised Face, Carbon Steel, ASTM A182, ASME B16.5, STD Bore, Threaded end	DN 25			
11	FLANGE	Socket Weld, Class 90, Raised Face, Carbon Steel, ASTM A182, ASME B16.5, STD Bore	DN 20			
12	FLANGE	Socket Weld, Class 90, Raised Face, Carbon Steel, ASTM A182, ASME B16.5, STD Bore	DN 15			
13	FLANGE	Blind, Class 90, Raised Face, Carbon Steel, ASTM A182, ASME B16.5, STD Bore	DN 80			
14	FLANGE	Blind, Class 90, Raised Face, Carbon Steel, ASTM A182, ASME B16.5, STD Bore	DN 50			
15	TEE (Equal)	Carbon Steel, ASTM A234 WPB-S, ASME B16.5, Schedule 40, Weld end	DN 80	Each	1	Ready to order
16	TEE (Equal)	Carbon Steel, ASTM A234 WPB-S, ASME B16.5, Schedule 40, Weld end	DN 50	Each	22	Ready to order
17	TEE (Reducing)	Carbon Steel, ASTM A234 WPB-S, ASME B16.5, Schedule 40, Weld end	DN 50 X DN 150 X DN 25	Each	47	Ready to order
18	TEE (Reducing)	Carbon Steel, ASTM A234 WPB-S, ASME B16.5, Schedule 40, Weld end	DN 50 X DN 50 X DN 20	Each	2	Ready to order
19	REDUCER (Conic)	Carbon Steel, ASTM A234 WPB-S, ASME B16.5, Schedule 40, Weld end	DN 80 X 50	Each	2	Ready to order
20	REDUCER (Conic)	Carbon Steel, ASTM A234 WPB-S, ASME B16.5, Schedule 40, Weld end	DN 50 X 40	Each	2	Ready to order
21	REDUCER (Conic)	Carbon Steel, ASTM A234 WPB-S, ASME B16.5, Schedule 40, Weld end	DN 50 X 32	Each	2	Ready to order
22	REDUCER (Conic)	Carbon Steel, ASTM A234 WPB-S, ASME B16.5, Schedule 40, Weld end	DN 50 X 25	Each	4	Ready to order

# Design by Simulation

Our expertise in simulation: Process Engineering, Hydraulics, Pipe stress and Structure



**U LOOP STRESS SIMULATION**



**BEDC**

## **OUR MAJOR WORK**





**BEDC**

Ongoing Project

## Effluent Treatment Plant

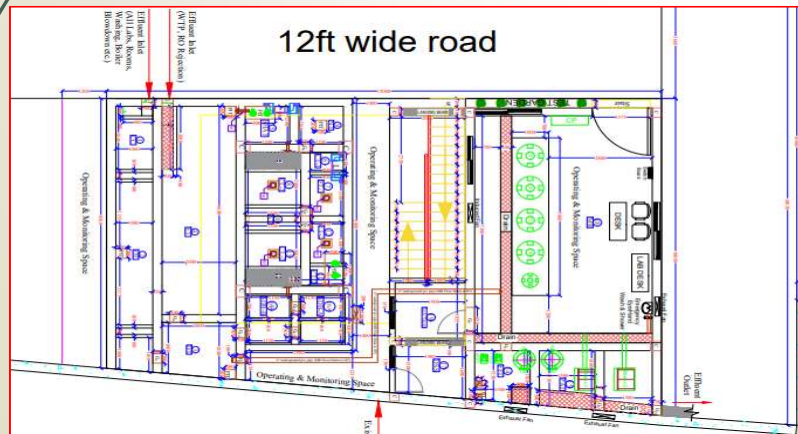
Client: UNIDO Pharmaceuticals Ltd.

Scope: Design, Drawing & Consultancy



PERSPECTIVE VIEW

3D Design



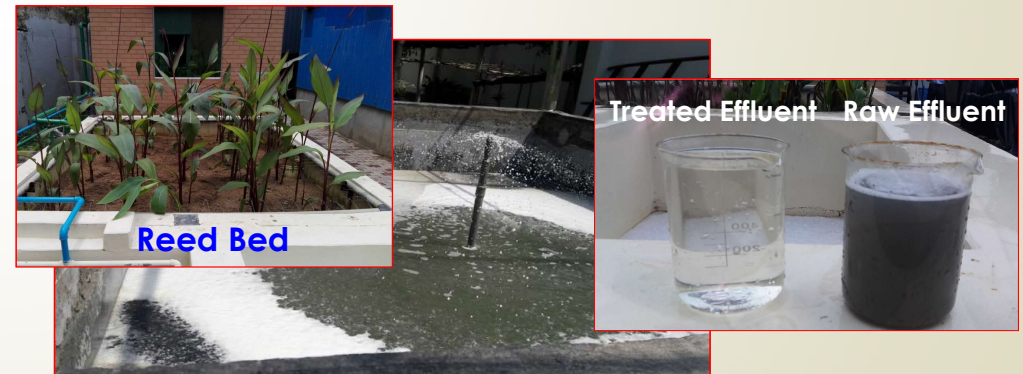
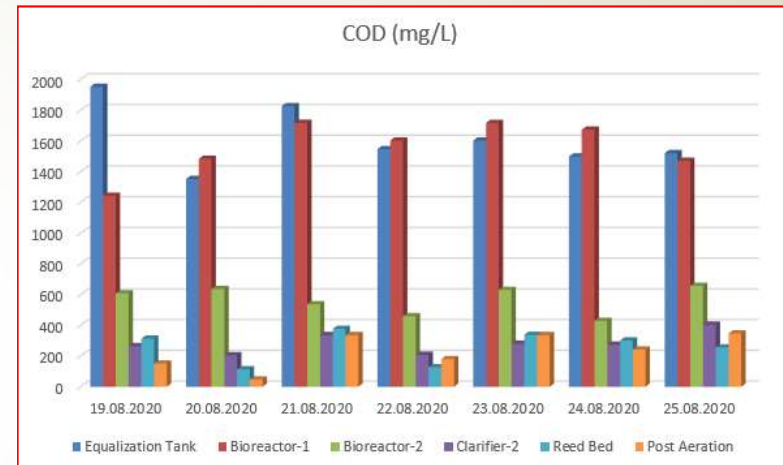
Plant Layout

Completed Project

## Effluent Treatment Plant

Client: NIPRO JMI Pharma Ltd.

Scope: Design, Drawing & Consultancy



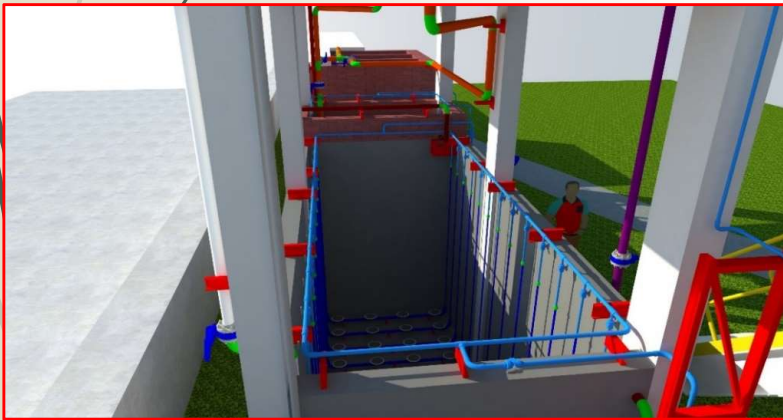
Post Aeration Tank

Completed Project

## Effluent Treatment Plant

Client: Aqua Refinery Ltd. (Capacity 5 m<sup>3</sup>/hr)  
Scope: Design, Fabrication, Supply, Installation and Commissioning

BEDC



3D Design



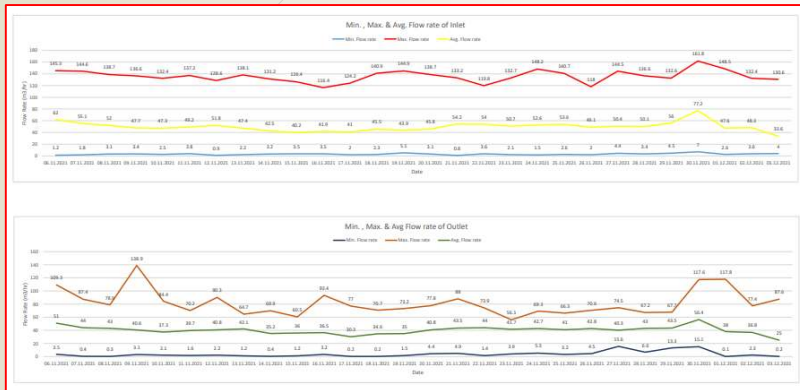
After Completion

Ongoing Project

# Effluent Treatment Plant

Client: Papertech Industries Ltd. (Capacity 60 m<sup>3</sup>/hr)  
Scope: Design, Drawing & Consultancy for Process Optimization & ZLD Plan

BEDC



Flow Rate Graph



Clarifier



Aeration Tank

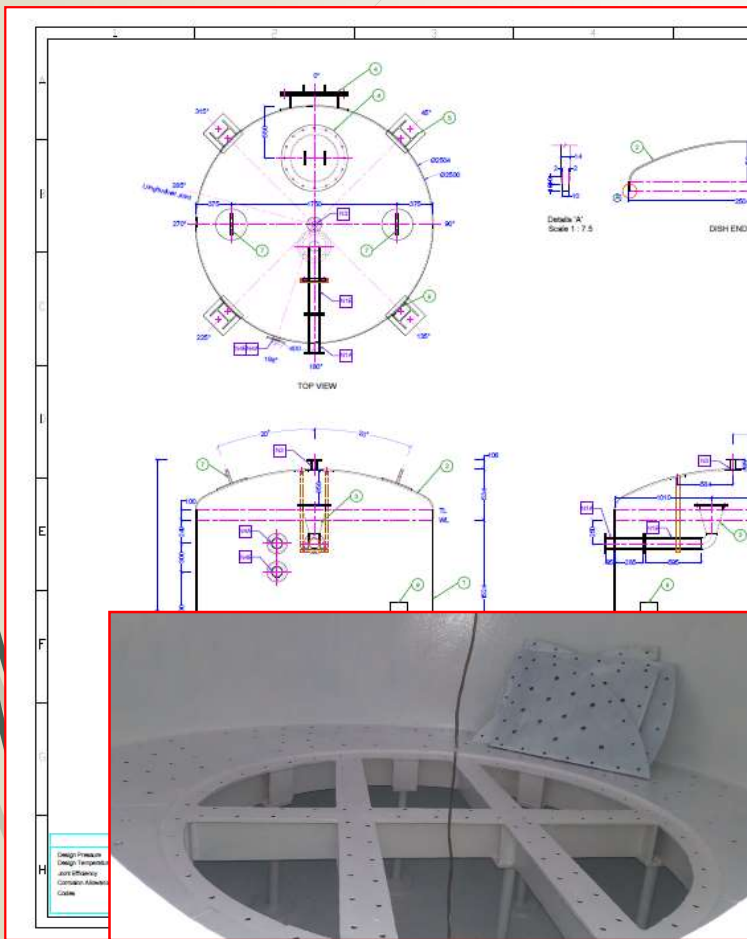
Completed Project

# WTP Pressure Vessel

Client: MAX Power Ltd. (Capacity 45 m<sup>3</sup>/hr)

Scope: Design, Fabrication and Installation of Pressure vessel for WTP

BEDC



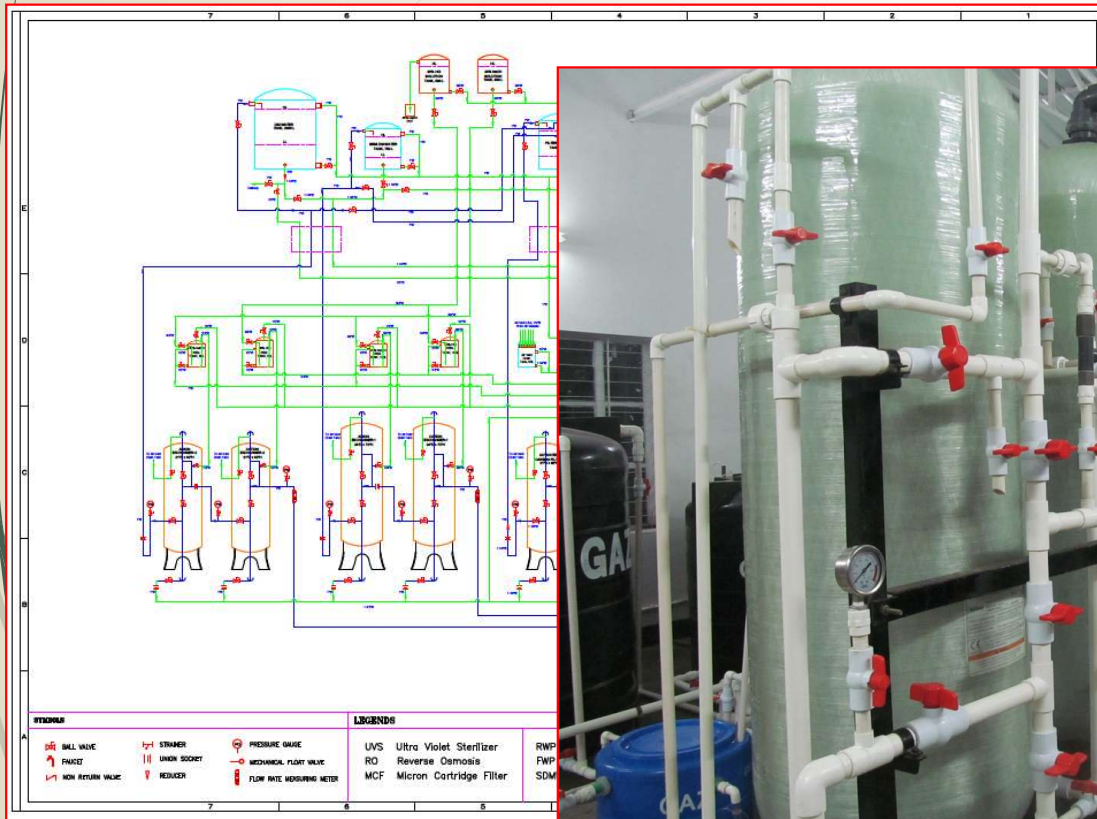
Completed Project

# DM Plant

Client: DRICM, BCSIR (Capacity 2000 lph)

Scope: Design, Installation, Commissioning and Training

BEDC



2015/01/09



2014/10/18

Completed Project

## Air Receiver Tank

Scope: Design, Fabrication, Test and Supply

BEDC



**Capacity: 1 – 10 m<sup>3</sup>**

**Design Pressure: 10-15 kg/cm<sup>2</sup>**

**Test Pressure: 15-20 kg/cm<sup>2</sup>**

**MOC: ASTM A 36 equivalent**

**Standard: ASME Boiler & Pressure vessel code, Section VIII-Rules for Constructions of Pressure Vessels**

Completed Project

## Drinking Water Dispenser

Scope: Design, Fabrication and Supply

BEDC



3D Design



Supplied Dispenser

**Capacity:**

**Hot Water: 5~50 lph @ 85 °C**

**Cold Water: 5~50 lph @ 15°C**

**Normal Water: 5-500 lph**

**MOC: SS-304, Thickness: 1 mm**

**Compressor: Panasonic, Malaysia**

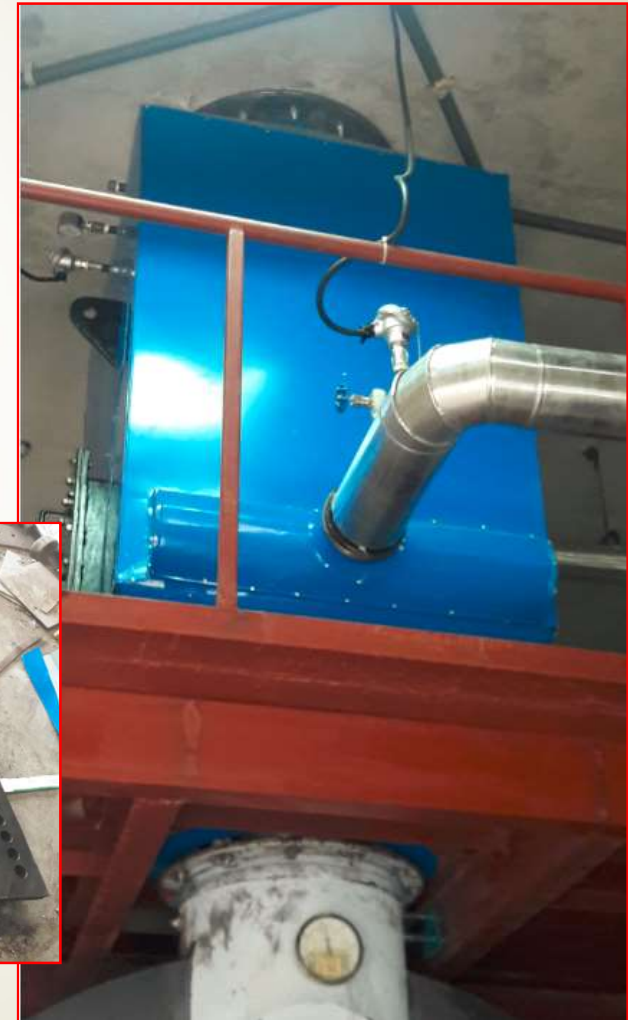
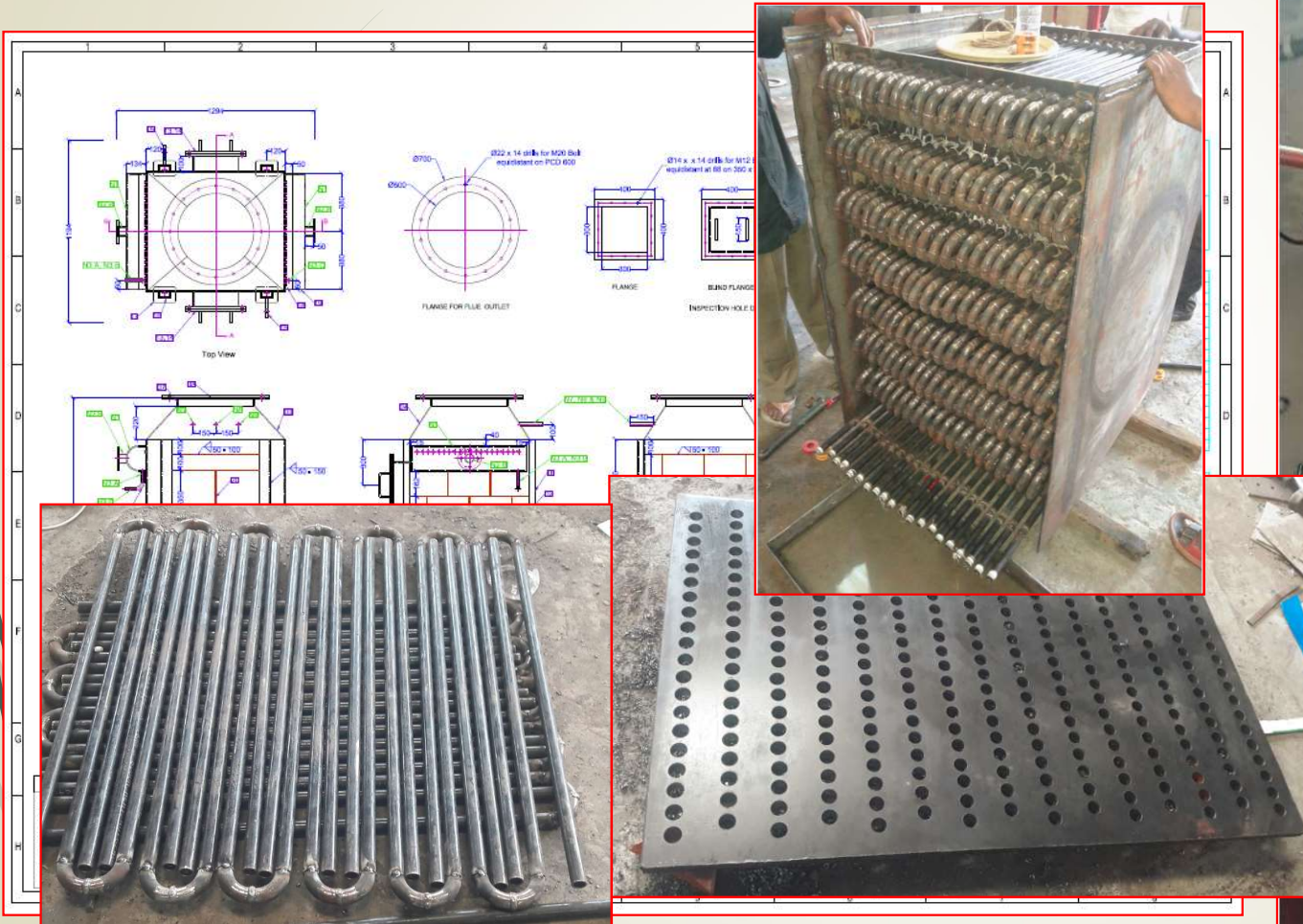
Completed Project

# Economizer

Client: MEL IS (For SKF, 4 ton/hour boiler)

Scope: Design, Installation and commissioning

BEDC



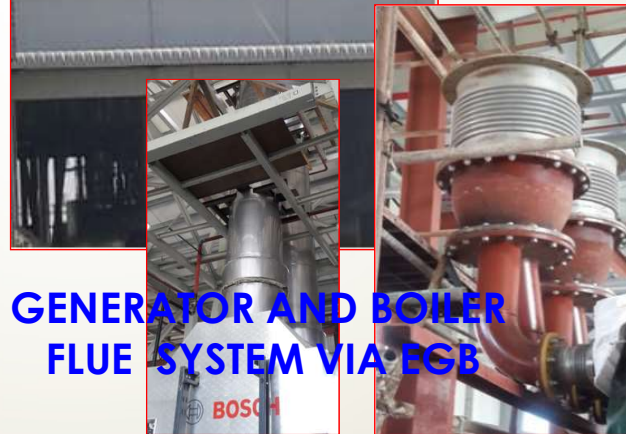
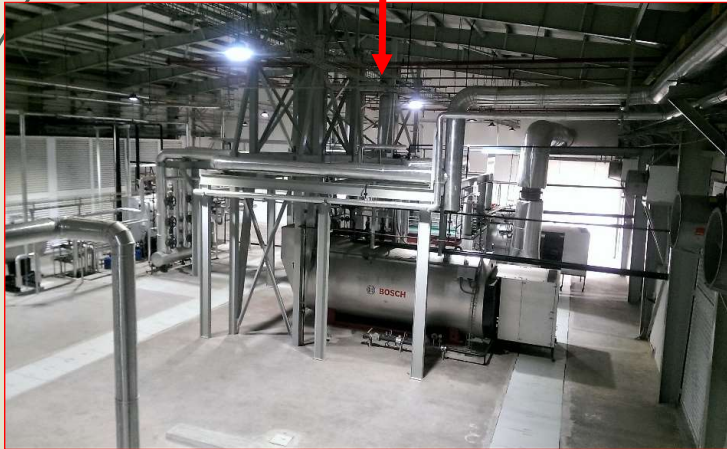
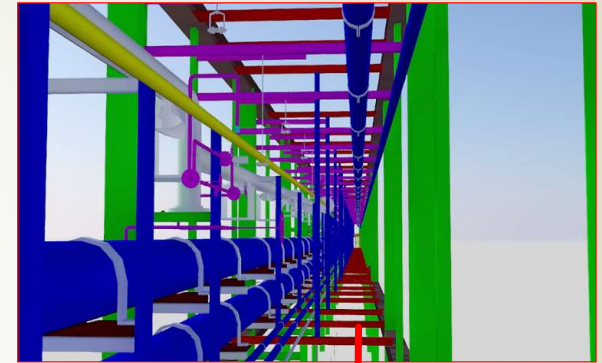
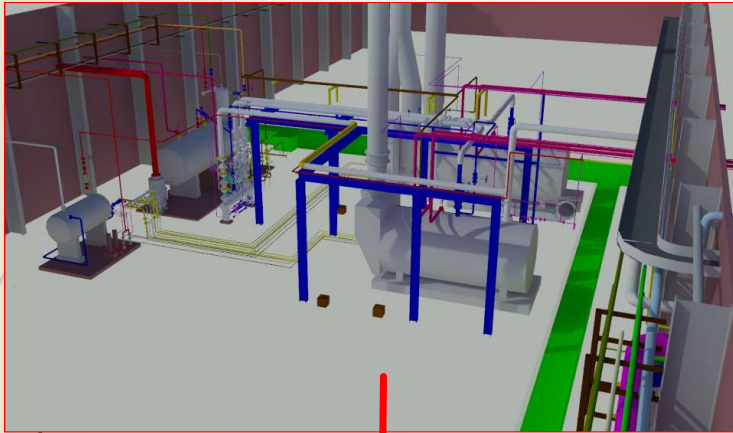
Completed Project

# Total Utility System Design

Client: Modern Erection (IS) Ltd. (For British American Tobacco, Savar Factory)

Scope: Design and Installation Supervision

BEDC



**BOILER ROOM ENGINEERING**

**GENERATOR AND BOILER  
FLUE SYSTEM VIA EGB**

**PIPE BRIDGE DESIGN**

Completed Project

# Total Utility System Design

Client: Modern Erection (IS) Ltd. (For British American Tobacco, Savar Factory)

Scope: Design and Installation Supervision

BEDC



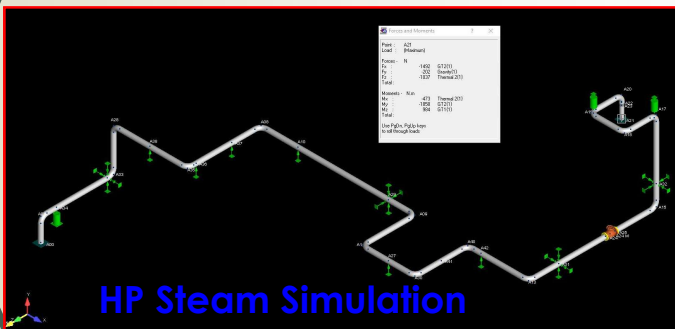
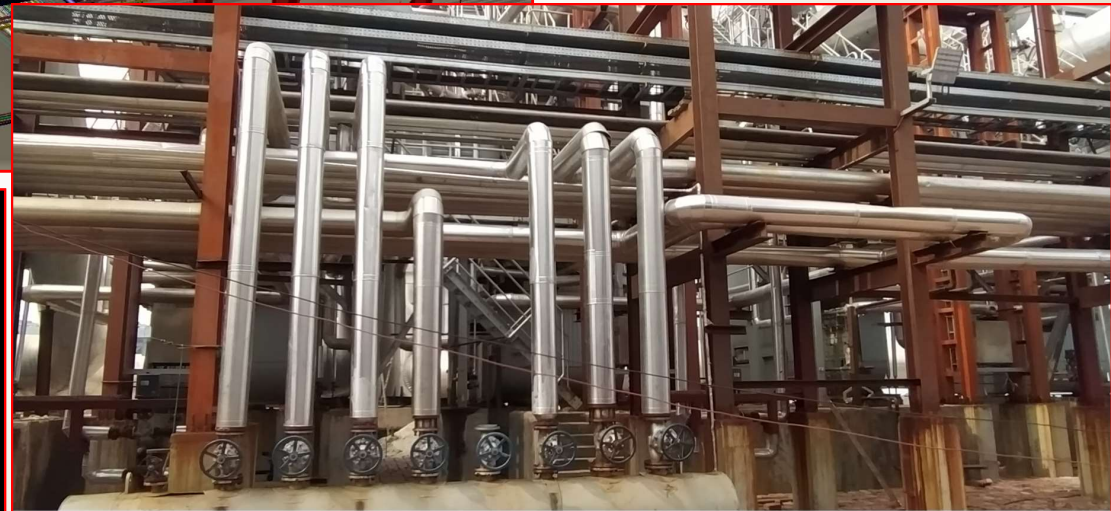
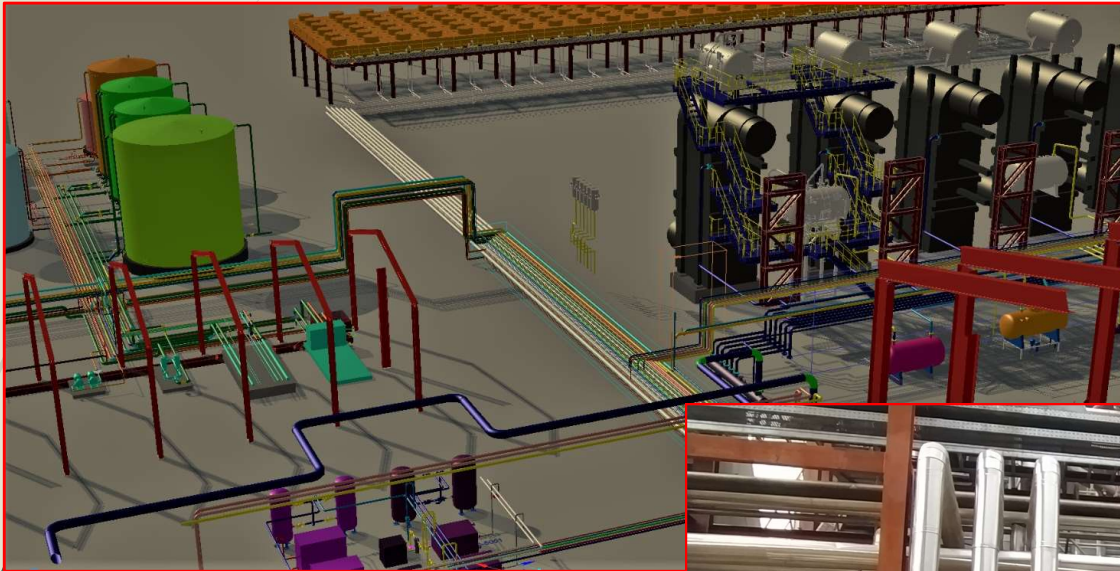
Completed Project

# Mechanical BOP-104 MW HFO Based IPP

Client: Orion Power Sonargaon Ltd.

Scope: Design and Installation Supervision

BEDC



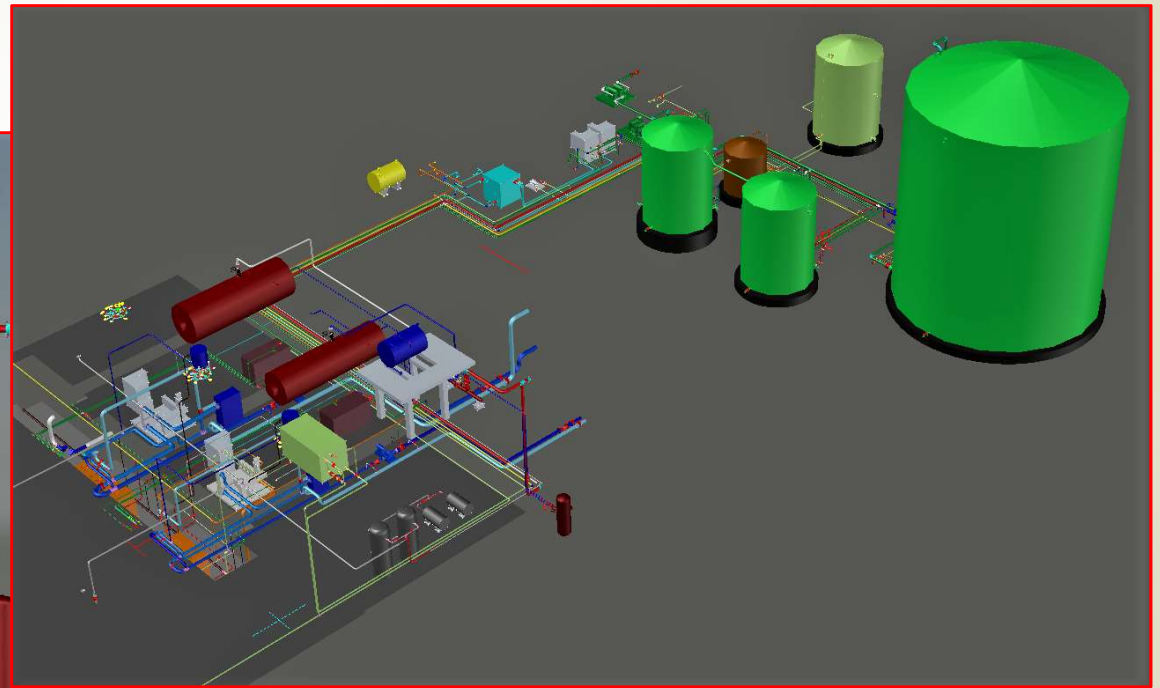
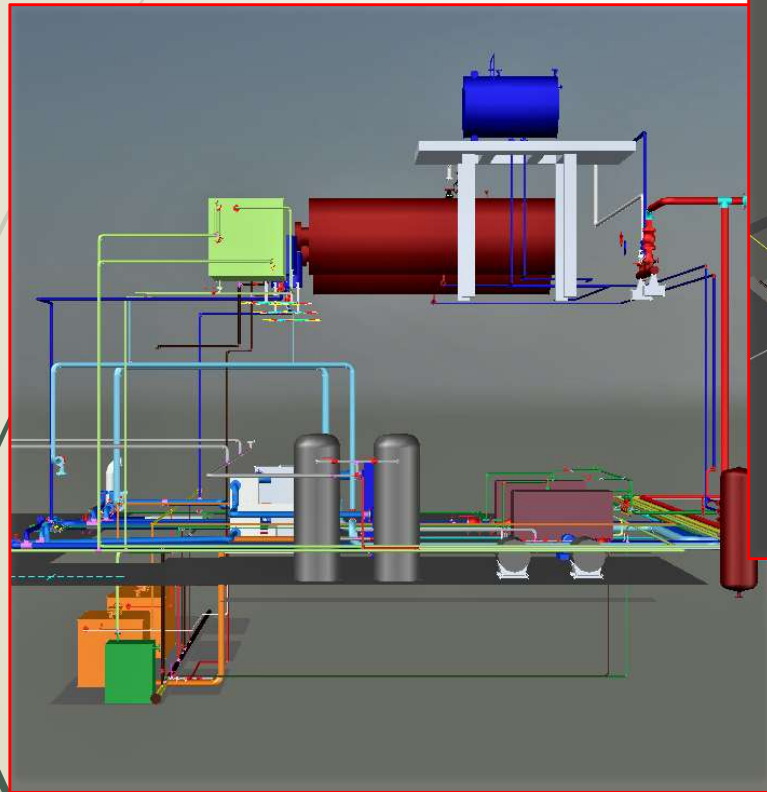
Ongoing Project

# Mechanical BOP-12.5 MW HFO based Power plant

Client: Energypac Generation Ltd.

Scope: Design and Installation Supervision

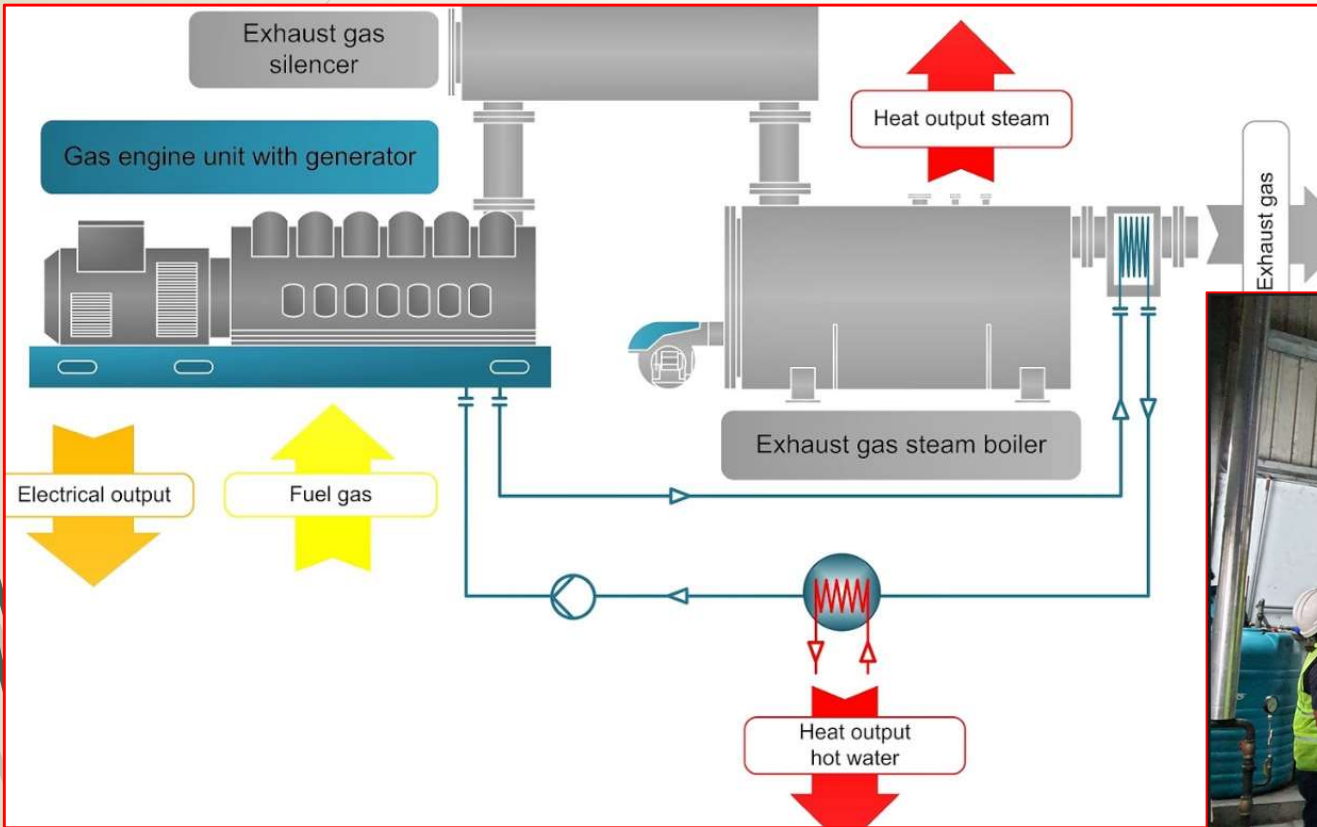
BEDC



**BEDC**

# **Inspection and Testing Service**

# Energy Audit- Generator, Boiler, Compressor, Electrical



testo 340  
VI.13 60902746/GB

---

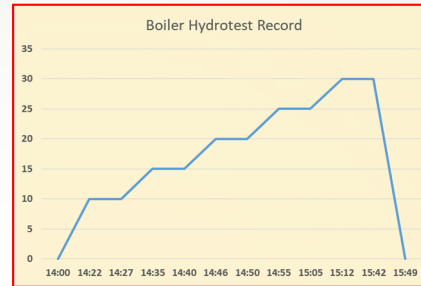
NEW3 PRO  
Start: 06.03.19 12:20:38

2.3	% O2
159	ppm CO
9.8	% CO2
4002	ppm NO
81.3	ppm NO2
4083	ppm NOx
550.4	°C FlueGas temp
51.3	% ExAir
.0013	ratio
32.8	°C Ambient temp
89.8	% Effn
	Effg
	Velocity
	Dewpoint
	Natural Gas
	3.0%
	11.9%
	temp.: - °C



# Boiler Inspection and Testing

BEDC



# Lifting Equipment Testing

BEDC

## ANNEX TO CERTIFICATE OF THOROUGH EXAMINATION AND LOAD TEST OF TOWER CRANE REF NO.: TC-BEDC-INT-08/19-016

407, T  
Dhaka  
Phone  
Fax  
Email

Crane User/Owner Details:	MAX INFRASTRUCTURE LTD. 27 Dilkusha, Baitul Hossain Building (6th floor), Motijheel C/A
Location of Inspection:	Rooppur NPP
Date of Inspection:	20-Aug-2019
Report Ref No :	<b>TC-BEDC-INT-08/19-016</b>



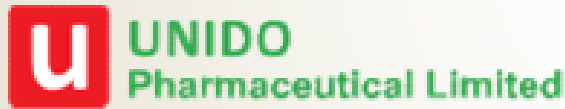
**Crane Description**

ZOOMLION T7525-16D Tower Crane. Crane Type: QTZ250 (T7525-16D). License No: TS2410614-2020. Serial No: 1012T001904112

# Our Clients



**APOLLO STICKERS CO.**  
(Since 1976)  
**APOLLO PRINTS**



The Civil  
Engineers  
Limited



## Our Vision:

Bangladesh Engineering Design & Consultancy (BEDC) is an organically grown Bangladeshi engineering firm to provide effective, energy efficient and innovative engineering design and consultancy service to industrial sector. It has been established in 2016 by engineers having professional fluency in design and providing fit for purpose solution to customers. Over past several years BEDC is glad to serve large MNC to local companies, some were tailored to custom fit.

As an engineering company, BEDC assure that relevant technical standard(s) are compiled in design as well as competent engineers are involved in all phases of each project to ensure sustainable functional objectives, quality and customer satisfaction.

Besides its own internal resources, BEDC has access to veteran professionals and academia resources for design and consultation. In this brochure, BEDC has showcased its completed projects and extent of services it is capable to offer to its customer. It also eager to accept any new challenge of advanced technology. Currently it is on its mission to provide reliable, optimum and eco-friendly ONE STOP solution to industrial sector and be a proud part of sustainable development of our beloved country, Bangladesh.

### [You are Welcome to Contact](#)

Address: Flat-A3, House-11, Road-12, Block-F, Niketon, Gulshan-1, Dhaka-1212, Bangladesh.

Email: [bedc.bd@gmail.com](mailto:bedc.bd@gmail.com) /// Website: [www.bedc-bd.com](http://www.bedc-bd.com)

Hotline: +88 01714 116342, +88 01714 116343